

Creusen Industrial

Instructions for use

Creusen belt- / benchgrinder
BSS 9200 / BSS 9250 / BSD 9300

The Creusen belt- / benchgrinder is a Dutch quality product which will give you many years of useful service, particularly if you closely follow the tips and recommendations given in these instructions.

Lots of succes!

Before starting work

Packing

The belt grinding unit of the machine is dismantled and placed separately in the packaging. See for the completion this mounting instruction.

Mounting

Before starting, remove the side cover (11) from the housing (1).

Then, remove nut (10), distance tube (17 **only with BSS 9200**), washer (9) and contact wheel (8) from the shaft.

- Place the beltgrinder housing (1) on the mouting disk (2a), sothat the mounting washer (2) comes up with the disk (2a) on the machine.
- Bring the housing in the good position and fix the fillister with head screw (3) with the help of a 5mm spanner.
Then fix the bolts with spring washer (4) in the housing (1).
- Mount the complete grinding support (5) with bolts (6).
- Place, washer (7), contact wheel (8), washer (9), and distance tube (17 **only with BSS 9200**) on the shaft of the machine and fix the entire items with nut (10).
- **Please take care that the grinding wheel at the right side of the machine is still fixed. If not fix it.**
- Controll the correct direction of rotation of the belt without the belt on the machine.
- Fit the belt and take care that the direction of rotation is correct, as indicated by means of arrows at the inside of the belt.
The arrows has to show the same direction of rotation as the sense of rotation of the machine.
- Fit the side cover (11).

Set – up

Fix the machine on a workbench or on a pedestal.

When fixing the machine on a workbench use wood screws and retaining rings.

When placing the machine on a Creusen pedestal use M6 nuts and bolts.

Fasten the machine with pedestal down on the floor.

Electrical connection

Mains Voltage

Before connecting up the machine, check that the actual mains voltage corresponds to the voltage on the nameplate.

Check that the grinding belt and wheel are rotating in the right direction.

Check this without the belt on the machine.

Switch 'on' for a fraction of a second and then quickly back to 'off' again.

Caution: do not let the machine reach full speed.

If the direction of rotation is wrong, the belt and wheel may work loose and cause damage. If the direction is wrong change over the two phase wires.

Safety

When grinding, always wear safety goggles.

Always remove the plug from the socket before carrying out maintenance work on the machine.

Fit only genuine Creusen spare parts.

The best way to work

Check if the grinding support (5) is fitted as close as possible to the belt.

The maximum distance is 2mm.

For the grinding wheel we refer to the directions of use of series 9000.

Allow the machine to reach full speed before you start grinding.

Adjusting the belt

As soon as the machine is ready for operation, switch it on and check that the belt runs exactly over the middle of the contact wheel (8).

If this is not the case, use the adjusting knob (12) to alter the belt positioning.

Twist of the lock nut (13) and adjust the belt with the adjusting knob (12).

Then fasten the nut again.

Height adjustment

The abrasive belt is 90° adjustable in height.

Contact grinding

General grinding work, such as deburring, sharpening of tools and finishing of construction work is done on the contact wheel (8) with the aid of the grinding support (5).

Adjust the grinding support using the bolt with spring washer.

Make sure that the object being worked on does not touch the edges of the contact wheel during grinding.

This can seriously damage the contact wheel.

Surface grinding

On the surface of the machine the work piece is worked on.

During grinding we recommend that you use the entire width of the belt as much as possible.

This prolongs the lifetime of the abrasive belt and the contact wheel

Changing the belt (1300 x 75mm)

Before changing the belt the machine must be switched off and at a complete standstill.

Remove the plug from the socket before you open the machine.

Remove the side cover (11). Push forwards the release knob (14).

The belt comes free and you can remove the old belt.

Fit the new belt, taking care that the direction of rotation is correct.

Check that the belt is running in the middle by manually rotating the contact wheel (8).

Never fit a narrower or wider belt. Preferably use a Creusen replacement belt.

The length of the belt may vary 2mm maximum.

Close the side cover (11).

Maintenance

Maintenance involves periodic cleaning of the guide surface and the contact wheel.

The guide surface (15) consists of a graphite strip for flat grinding. When cleaning the contact wheel (8) also remove the dust from inside the machine.

Extraction

Creusen also delivers stable pedestals with and without dust extraction. Models AK 9000 HD or K 9000 HD.

If a dust extraction system is available on the premises, the machine can be coupled up to this.

The connection on the machine is 50mmØ.

Warranty

Each Creusen belt grinder is carefully checked before it leaves the factory.

This is one of the reasons why you receive a 5 year factory warranty covering material and/or manufacturing defects on the motor.

Obviously, this warranty is subject to certain conditions.

Conditions

This warranty only applies after we have ascertained that a motor part or parts was or were defective as from the start.

The warranty does not cover defects resulting from inexpert use or careless treatment.

If you wish to make use of your warranty rights, contact your supplier to decide on what action to take and also send in a dated purchase invoice.

Any form of transport damage on route from or to the factory is not covered by the warranty.

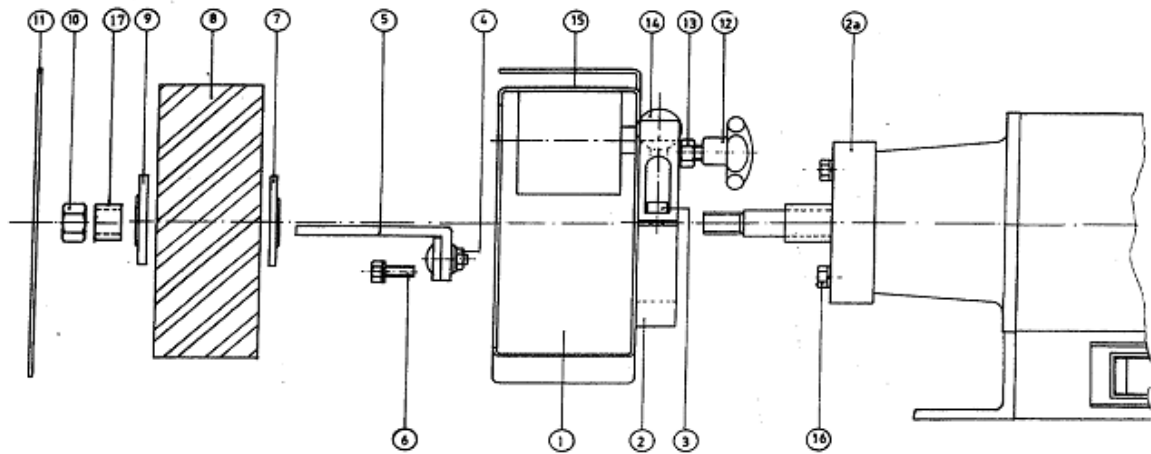
We cannot accept for repair any machines and/or parts which are sent in direct, i.e. not via your supplier.

We reserve the right to refuse responsibility if parties other than Creusen or on behalf of Creusen have made or attempted to make repairs. We do not recognise any other written or oral warranty conditions in respect of our products.

All our deliveries are further subject to our General Conditions of Delivery and Sale.

For use of the grinding wheel, the adjustment of it, or the changing of the wheel we refer to the enclosed operating instructions 9000 series.

Technical changes prohibited.



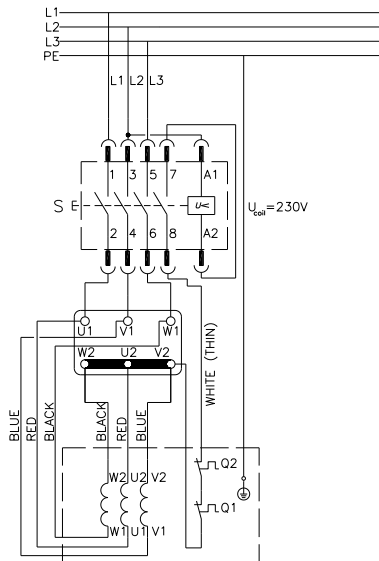
- | | |
|---|--------------------------------------|
| 1. housing beltgrinder unit | 9. washer |
| 2. mounting washer | 10. nut M20L |
| 2a. mounting disk | 11. side cover |
| 3. fillister head screw with hexagon socket M6x20 | 12. adjusting knob |
| 4. bolt with spring washer M6x15 | 13. lock nut M8 |
| 5. grinding support complete | 14. release knob |
| 6. bolt M8x15 | 15. guide surface |
| 7. washer | 16. fixation bolt |
| 8. contact wheel | 17. distance tube (at BSS 9200 only) |

Technical specifications

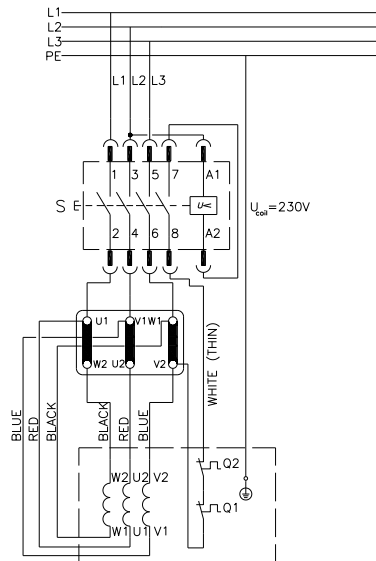
Type	BSS 9200	BSS 9250
Voltage V	220-240/380-415	220-240/380-415
Hz	50-60	50-60
Power P1 kW	1100	1400
Power P2 kW	850	1100
Speed min ⁻¹	2800/3400	2800/3400
Speed m/sec	30-36 30-36 (wheel)	30-36 37-44 (wheel)
Belt size l x w in mm	1300 x 75	1300 x 75
Grit	80	80
Contactwheel d1 x b in mm	Ø200 x 75	Ø200 x 75
Grindingwheel dl x b x d2 in mm	200 x 25 x 20	250 x 30 x 20
Grit	80	80
Noise level dB (A)	78	78
Weight kg	32	40

Wiring diagram series 9000 3~

Creusen



HIGH VOLTAGE (STAR)



LOW VOLTAGE (DELTA)

EC-declaration of conformity for machines

Creusen Metalworking Machines BV
Dr Philipslaan 39
6042 CT Roermond
The Netherlands

herewith declares that Creusen Industrial grinders series 9000
are in conformity with the

- * European Machinery Directive 2006/42/EC
- * The EC guidelines
 - Low Voltage Directive 2006/95/EC
 - Electromagnetic compatibility 2004/108/EC,

Creusen Metalworking Machines BV
P.O. Box 194
6040 AD Roermond
the Netherlands