

The Creusen belt grinder is a Dutch quality product which will give you many years of useful service, particularly if you closely follow the tips and recommendations given in these instructions.

Before starting work

Packing

The fully assembled machine is installed on a pallet and is securely packed.
Remove the packing.



Set - up

To ensure optimum use, set up the machine in a position in which it is easily accessible from all sides. The machine can be placed on a flat floor (also without a foundation). You can fasten the machine down using bolts with a maximum diameter of 10mm.

After setting up the machine, fit the protective eye shield (13).

Check also that the abrasive belt runs freely.

If you have model BS 975 A/HD-B-2n and BS 9150 A/HD-B-2n, also fit the hose in the front (80 cm) as well as the rear (50 cm).

You check if a filtermat is placed in the collector tray (18).

The grinder is fitted with a belt for grinding aluminium and stainless steel.



Is the machine prepared with a brake, please follow the below instructions.

The brake stops the machine within 3 seconds, if connected in star.

If the electrical connections is triangle the stopping time is longer.

Machines with 2- speed motor and integrated brake have the indication **B-2n** in the type indication, also a different article number compared to the regular belt grinder.

In this manual following pictograms are used:



Denotes possible personal injury or damage so the machine if the instructions in this manual are ignored.



Denotes risk of electrical shock.



Electrical connection

The drive motor is fitted with a thermal overload protection and with a switch with no-volt release and emergency power cut off.

The machine must be connected up by a qualified electrician to a three-phase supply by means of a cable and socket connection, on L1, L2, L3, PE.

Remove the belt before controlling its correct direction of rotation.

If the direction of rotation is incorrect, first switch off the power supply and then change over the connections of two phases or ask a technician to change over the two phase wires.

In model BS 975 A/HD-B-2n and BS 9150 A/HD-B-2n (with extractor unit) the extractor motor is already connected up.

This motor is connected parallel to the main motor and is therefore protected as well.

When the machine is switched on, the motor of the dust extraction unit starts up simultaneously.

When switching from high voltage to low voltage, change as well the motor as the radial fan.

Please refer to the wiring diagram.

If voltage falls out, the brake does not work. The grinder needs 22 seconds to stop.

Safety

When grinding, always wear safety goggles.

The machine is constructed in such a way that the switch is always accessible, even when the top cover (6) is open.

A footswitch with emergency power cut off is mounted as emergency switch. When pushing the button of the footswitch the belt grinder stops within 3 seconds.

When using the machine again, unbolt the red button of the footswitch, after which the machine can be switched on, using the motorswitch.

The protective eye shield (13) is in the optimum position if you are looking vertically down at the shield during grinding.

Always remove the plug from the socket before carrying out maintenance work on the machine.

Fit only genuine Creusen spare parts.

GENERAL SAFETY INSTRUCTIONS

- Keep work area clean.
Cluttered work areas can cause accidents.
- Consider work area environment
Do not expose electric machines to humidity. Keep work area well lit. Do not use electric machines in the presence of inflammable liquids or gasses.
- Dress properly
Do not wear loose clothing or jewellery. They can be caught in moving parts. Tie long hair together.
- Wear safety goggles
Also use a face or dust mask in case the operations produce dust or flying particles.
- Keep children away
Do not allow other persons to touch the machine. Supervision is required for those under 16 years of age.
- Use appropriate machine
The intended use is laid down in this instruction manual.
- Maintain machine with care
Keep the machine clean for better and safer performance.
- Follow the instructions for maintenance and changing of accessories
Regularly inspect the mains cord and, if damaged, have it repaired by a qualified technician.
- Always have your machine repaired by a qualified technician
This electric machine meets the relevant safety regulations. To avoid danger, electric appliances must only be repaired by qualified technicians.

SAFETY INSTRUCTIONS



Installing

- Installing to be done by a technician.
- Before connecting the machine, check if the actual main voltage corresponds to the voltage on the type plate. Check with three-phase machine also the connection on the terminal board. See drawing.
- Connect the machine in accordance with the safety regulations (NEN 1010) and also observing any locally applicable regulations.

The belt grinder is for continuous operation.



A machine with brake is prepared when delivered. The adjustment is sealed. When opening the seal the warranty falls into decay.



Starting 3-phase machines

To check the direction of rotation, switch the machine on briefly so that the machine does not reach full speed.



If the direction of rotation is incorrect, first switch off the power supply and then change over the connections of two phases or ask a technician to change over the two phase wires.

The best way to work

Adjusting the belt

As soon as the machine is ready for operation, switch it on and check that the belt runs exactly over the middle of the contact wheel (14).

If this is not the case, use the adjusting knob (5) on the motor bracket to alter the belt positioning.

Turning the knob clockwise moves the belt to the right.

An anti-clockwise turn shifts the belt to the left.

Height adjustment

By unloosening handle (10) you can set the required working height.

The abrasive belt is adjustable in height between 70 and 105 cm.

After adjusting, tighten the bolt firmly again.

Contact grinding

General grinding work, such as deburring, sharpening of tools and finishing of construction work is done on the contact wheel (14) with the aid of the grinding support (1).

Adjust the grinding support using the star shaped knob (2).

During this operation the top cover is closed.

Make sure that the object being worked on does not touch the edges of the contact wheel during grinding.

This can seriously damage the contact wheel.

Surface grinding

Open up the top cover (6) and hold the workpiece firmly against the stop bracket (3).

During grinding we recommend that you use the entire width of the belt as much as possible.

This prolongs the lifetime of the abrasive belt.

Changing the belt (2000 x 75mm or 2000 x 150mm)

Before changing the belt the machine must be switched off and at a complete standstill.

Remove the plug from the socket before you open the machine.

Open up the top cover (6) and the side cover (7) and lift up the fast tensioning and quick release (9).

Remove the old belt. Fit the new belt, taking care that the direction of rotation is correct.

After the fast tensioning and quick release (9) has been pushed down the belt is tensioned.

The length of the belt may not be shorter than 1950mm and not longer than 2005mm.

Check that the belt is running in the middle by manually rotating the drive wheel (15) in the right direction.

Close side cover and top cover.

Never fit a narrower or wider belt.

Preferably use a Creusen replacement belt. You are assured of a top quality, the perfect length and a superb tape joint.



Warning when using aluminium and/ or stainless steel

When changing the grinding material, e.g. from stainless steel to aluminium, we advise using a new belt.

It is very important to clean the upside of the collector tray, renew the filter and clean the dust hoses.

When a combination of mixed materials are used, the temperature can rise with an explosion and a dust fire as a result.

Maintenance

Maintenance involves periodic cleaning of the guide surface, the contact wheel and the spark arrestors.

The guide surface (12) consists of a graphite strip for flat grinding. When cleaning the contact wheel (14) also remove the dust from inside the machine.

Empty the spark arrestors of models BS 975 HD-B-2n and BS 9150 HD-B-2n in good time (8).

This is done by loosening the star-shaped knob on the spark arrestor, in front and at the rear.

Extraction

If a dust extraction system is available on the premises, the machine can be coupled up to this.

If such a system is not available, the model BS 975 A/HD or BS 9150 A/HD –with built-in dust and swarf extraction unit- will prevent excessive dust nuisance.

Do you possess a model BS 975 A/HD-B-2n or BS 9150 A/HD-B-2n please empty the collector tray regularly and renew the filter.

We advise you to buy spare Creusen filters before or when using the machine.

Creusen article no. 900746

Warranty

Each Creusen belt grinder is carefully checked before it leaves the factory. This is one of the reasons why you receive a 5 year factory warranty covering material and/or manufacturing defects on the motor. The warranty on the brake is 1 year. Obviously, this warranty is subject to certain conditions.

The warranty on the brake is 1 year.

- The dated receipt or invoice from your supplier serves as the warranty.
- The warranty only applies if Creusen has established or on behalf of Creusen it has been established that the damage did not result from inexpert use.
- If you want to claim on the warranty you must return the complete machine in a durable packaging to your supplier, accompanied by the dated receipt of your supplier. Machines sent directly to Creusen, incomplete machines, and machines which are sent in with postage unpaid are not accepted.
- Transport damage is beyond the scope of liability of Creusen.
- Your warranty expires if repairs have been carried out by third parties.



**A machine with brake is prepared when delivered. The adjustment is sealed.
When opening the seal the warranty falls into decay.**

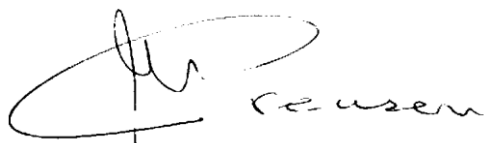
We do not recognise any other written or oral warranty conditions in respect of our products.
All our deliveries are further subject to our General Conditions of Delivery and Sale.

EC declaration of conformity for machines

Creusen Metalworking Machines BV
Dr Philipslaan 39
6042 CT Roermond
The Netherlands

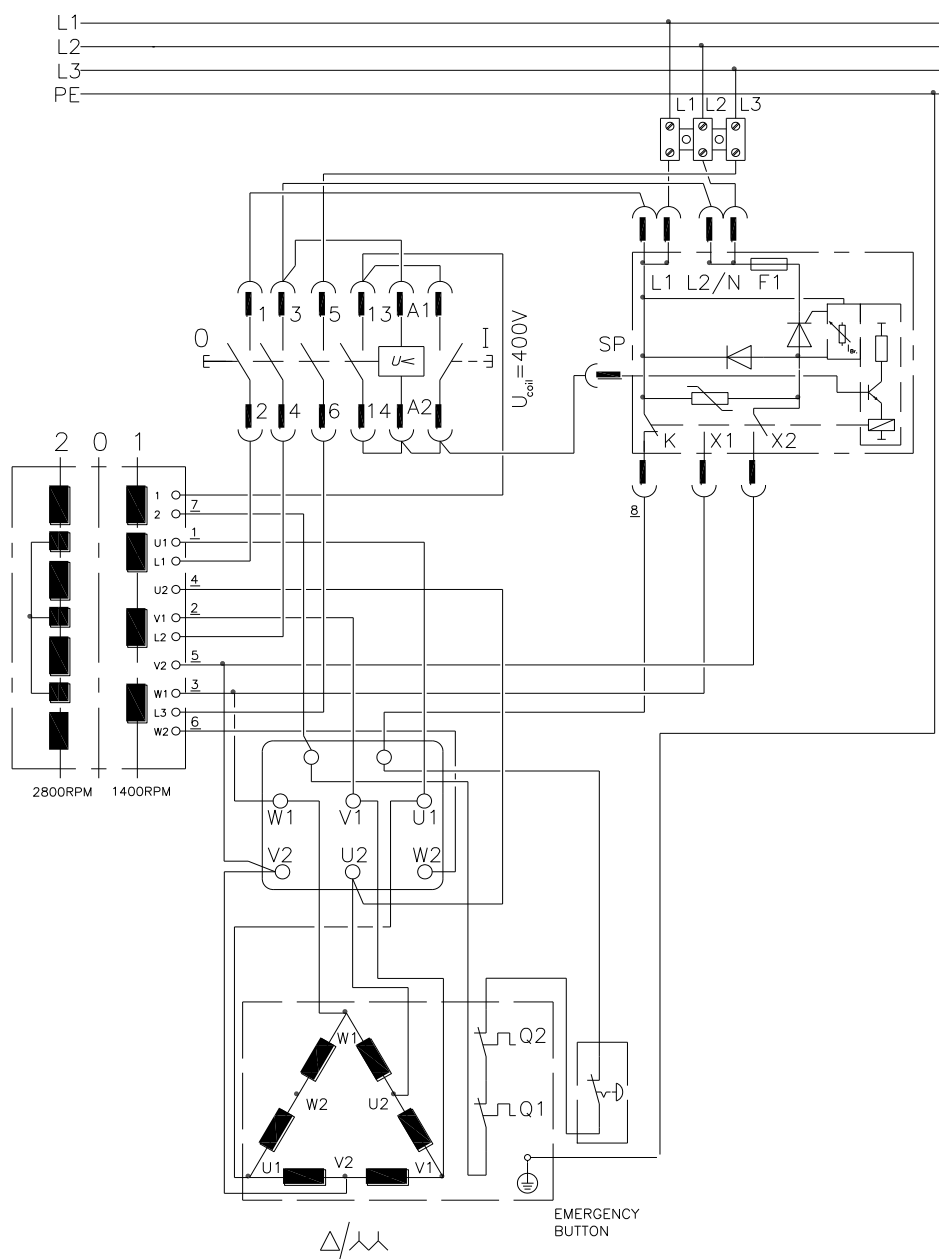
herewith declares that Creusen Industrial grinders with 2- speed motor and integrated brake
BS 975 HD-B-2n / BS 975 A/HD-B-2n / BS 9150 HD-B-2n / BS 9150 A/HD-B-2n

- * European Machinery Directive 2006/42/EC
- * The EC guidelines
 - Low Voltage Directive 2006/95/EC
 - Electromagnetic compatibility 2004/108/EC

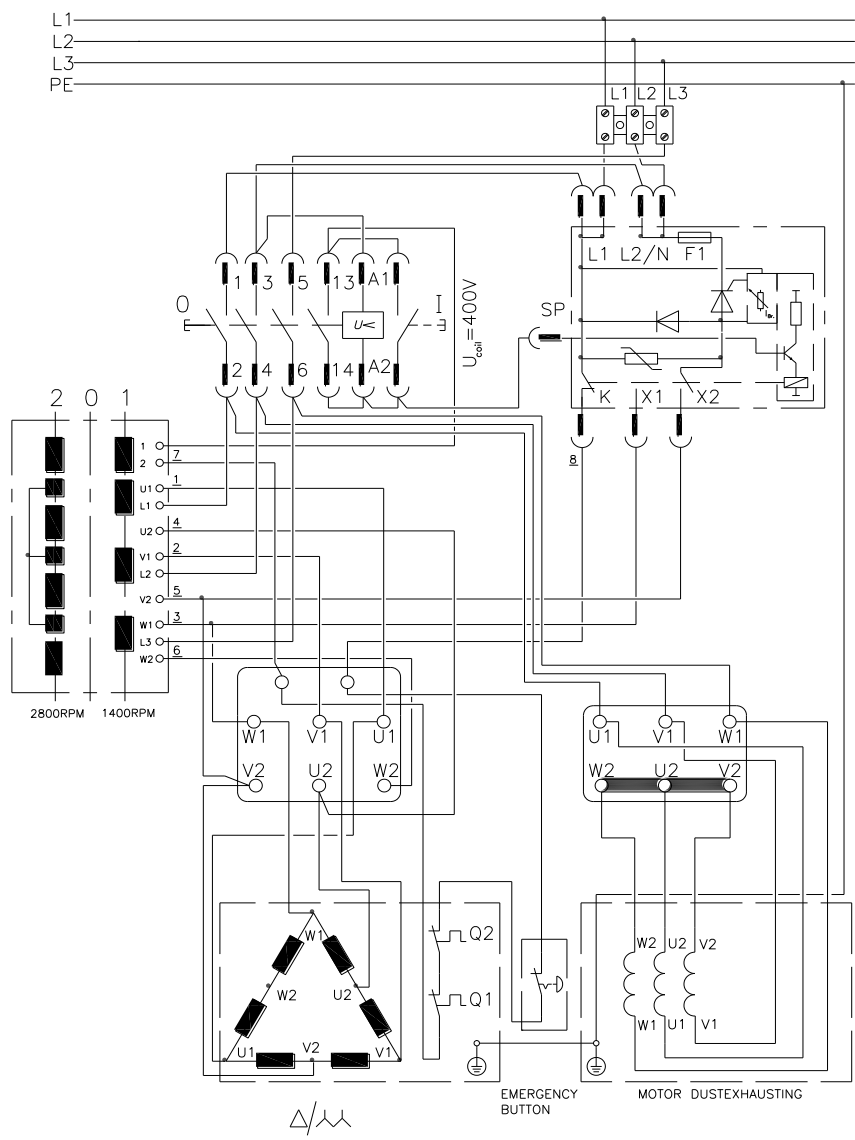
A handwritten signature in black ink, consisting of a stylized 'M' followed by 'J.F.' and the word 'Creusen' written in a cursive script.

M.J.F. Creusen

Belt grinder with 2-speed motor and without dust extraction



Belt grinder with 2-speed motor and dust extraction



Technical specifications

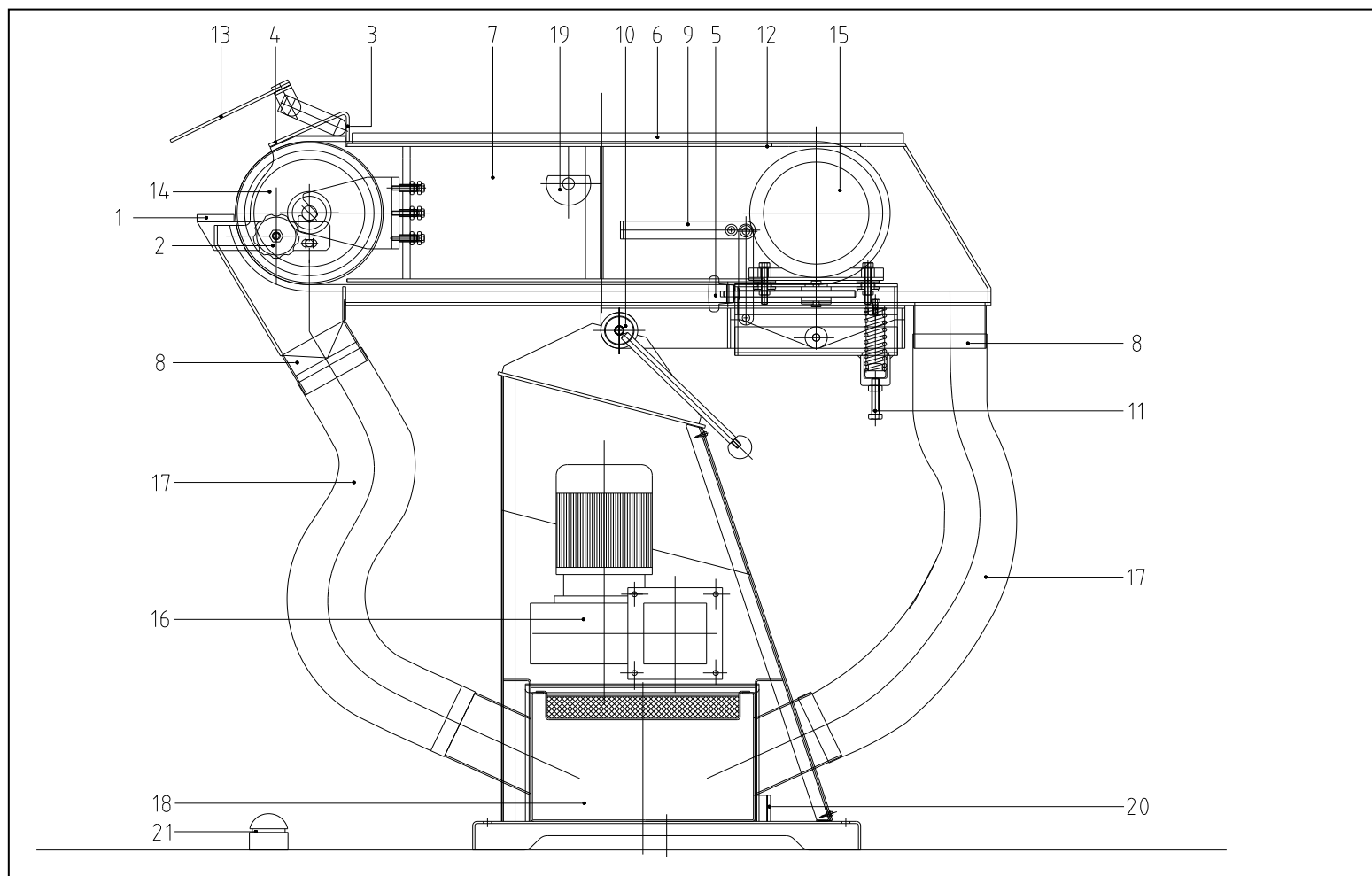
Type	BS 975 HD-B-2n BS 975 A/HD-B-2n	BS 9150 HD-B-2n BS 9150 A/HD-B-2n	Extractor BS 975 A/HD-B-2n BS 9150 A/HD-B-2n
Motor type	90L-2DKV/B3	90L-2DKV/B3	N302
Radial fan			
1 ^e shaft end	24k6 x 56	24k6 x 131	
Voltage V	400 Δ/λ λ 3~	400 Δ/λ λ 3~	400 Δ/λ λ 3~
Hz	50	50	50
Power P1 kW	4	4	0,18
Speed min ⁻¹	1400 / 2800	1400 / 2800	1400 / 2800
Speed m/sec	15 / 30	15 / 30	
Belt size l x br in mm	2000 x 75	2000 x 150	
Grit	80	80	
Flat grinding surface in mm	650 x 75	650 x 150	
Contactwheel d1 x b in mm	Ø200 x 75	Ø200 x 150	
Working height in mm	700-1050	700-1050	
Noise level dB (A)	75	78	70
Weight kg	90 100	110 120	
Capacity m ³ /h			600
Hose connection Ø in mm			100
Filter in mm FC 200			255 x 340

Creusen Metalworking Machines BV
P.O. Box 194
6040 AD Roermond
the Netherlands



Technical modifications reserved
© Creusen 2011

BS975HD-B-2n/10/11/e



1. Grinding support
2. Star shaped knob
3. Stop bracket
4. Protective cover
5. Adjusting knob
6. Top cover
7. Side cover
8. Spark arrestor
9. fast tesioning and quick release
10. Handle
11. Spring
12. Guide surface
13. Protective eye shield
14. Contact wheel
15. Drive wheel
16. Radial fan
17. Extractor hoses
18. Collector tray
19. Key housing lock
20. Brake
21. Footswitch

BS 975 A/HD-B-2n
BS 9150 A/HD-B-2n

